

# CREATE PERFECT SKIN IN FOUR EASY STEPS



iS CLINICAL, a global brand, is a scientifically advanced luxury skincare line that bridges the gap between science and beauty. iS CLINICAL is dedicated to producing highly effective, clinically validated skincare products that deliver dramatic physiological improvements to the skin.

YOUR SKIN, OUR SCIENCE...

*Pure Chemistry*



iS CLINICAL



COSMECEUTICALS

INNOVATIVE SKINCARE

cleans e

## CLEANSING COMPLEX

**RESURFACING, CLEARING, DEEP-CLEANSING**

Key Ingredients:

White Willow Bark Extract, Sugar Cane Extract,  
Chamomile Extract, Centella Asiatica

This award-winning lightweight daily cleansing gel thoroughly cleanses the skin without stripping or drying. This multi-tasking treatment minimizes the appearance of pores, removes makeup, helps control breakouts, and is excellent for shaving. **CLEANSING COMPLEX** is good for all ages, skin types and genders.





treat

## ACTIVE SERUM

AGE-DEFYING, CLEARING, BRIGHTENING

Key Ingredients:

Sugar Cane Extract, Bilberry Extract, White Willow Bark Extract, Arbutin, Mushroom Extract

### CLINICALLY PROVEN RESULTS

**AGE-DEFYING**  
**65%**  
reduction in  
the appearance of  
fine lines & wrinkles



BEFORE



AFTER 12 WEEKS

**ANTI-BLEMISH**  
**94%**  
reduction in  
blemishes



BEFORE



AFTER 12 WEEKS

**BRIGHTENING**  
**57%**  
reduction in  
uneven skin tone



BEFORE



AFTER 12 WEEKS

Study performed at Arizona Longevity Institute

The ultimate multi-tasking treatment serum; ACTIVE SERUM is clinically proven to safely improve the appearance of fine lines and wrinkles, breakouts, and discoloration. Great for all skin types, ages, and genders.



treat

## Genexc® SERUM

with Extremozyme® Technology 

**PROTECTIVE, REGENERATIVE, AGE-DEFYING**

Key Ingredients:

Extremozymes®, L-Ascorbic Acid, Hydrolyzed Eruca Sativa Leaf, Terminalia Ferdinandiana Fruit (Kakadu Plum) Extract, Mixed Fruit Acids, Superoxide Dismutase (SOD)



The future of skincare has arrived. One of our most powerful antioxidants featuring 20% L-Ascorbic Acid; this powerful lightweight serum is clinically proven to message your genes to return to youth. The appearance of fine lines, wrinkles and discoloration improves as your complexion visibly transforms; revealing a more healthy, luminous, and youthful appearance.

treat

## PRO-HEAL SERUM® ADVANCE+®

**RESTORATIVE, SUPER ANTIOXIDANT, REPARATIVE**

Key Ingredients:

Vitamin C, Vitamin E, Vitamin A, Olive Leaf Extract,  
Mushroom Extract

This rich lightweight serum features a powerful combination of Vitamin C (L-Ascorbic Acid), Vitamin E, Vitamin A, and Olive Leaf Extract. PRO-HEAL SERUM ADVANCE+ helps soothe the appearance of red, irritated skin as it provides the ultimate antioxidant protection. Excellent for helping to calm visible redness and inflammation associated with rosacea and blemishes. Great for all ages, skin types and genders.



treat & hydrate

## SHEALD™ RECOVERY BALM

**PROTECTIVE, SOOTHING, NOURISHING**

Key Ingredients:

Hyaluronic Acid, Glycerin, Vitamin E, Oat Kernel Extract,  
Vitamin B5

### CLINICALLY PROVEN ENVIRONMENTAL PROTECTION

SHEALD RECOVERY BALM is an ultra-rich protective formula that dramatically replenishes hydration to dry, sensitive, or severely compromised skin (including burns and open wounds). This bio-nutrient and antioxidant rich balm helps support optimal skin barrier function while helping to soothe the discomfort of dry, distressed, and post-procedure skin. Excellent moisturizer for harsh, cold and/or dry climates.





treat & hydrate

## BRIGHTENING COMPLEX

**SAFE BRIGHTENING, HYDRATING, ANTIOXIDANT**

Key Ingredients:

White Willow Bark Extract, Glycerin, Squalane, Imperata Cylindrica Root Extract, Sugar Cane Extract, Bilberry Extract

treat

## BRIGHTENING SERUM

**TARGETED BRIGHTENING, REVITALIZING, FAST ACTING**

Key Ingredients:

Norwegian Kelp Extract, Sugar Cane Extract, Bilberry Extract, Arbutin, Mushroom Extract

Clinically proven high-performance brightening formulations that work well individually or as a powerful duo. Both the multi-tasking BRIGHTENING COMPLEX and targeted booster BRIGHTENING SERUM feature rare and powerful botanical extracts including Norwegian kelp, willow bark, bilberry, and mushroom that work synergistically to safely and effectively address visible skin discoloration as well as fine lines and wrinkles; resulting in a brighter, smoother, and more vibrant appearance.

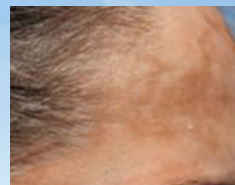
## CLINICALLY PROVEN RESULTS



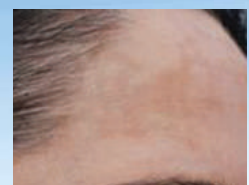
BEFORE



AFTER 90 DAYS



BEFORE



AFTER 90 DAYS

Study performed at Skin Investigation and Technology



treat & hydrate

## YOUTH EYE COMPLEX®

**SMOOTHING, HYDRATING, ILLUMINATING**

Key Ingredients:

Acetyl Octapeptide-3, Copper Tripeptide Growth Factor, Hyaluronic Acid, Pseudoalteromonas Ferment Extract

Antioxidant-rich and hydroxy acid free, this clinically proven regenerative eye treatment addresses visible signs of skin aging around the eyes including fine lines and wrinkles, dark under-eye circles, and puffiness. Provides both immediate and long-term results.

### CLINICALLY PROVEN RESULTS

Users show dramatic improvement in dark under-eye circles, puffiness and periorbital wrinkling.



BEFORE

AFTER 3 HOURS

Study performed at Miami Cosmetic Research Group, LLC



treat & hydrate

# YOUTH INTENSIVE CRÈME®

**AGE-DEFYING, HYDRATING, FIRMING**

Key Ingredients:

Copper Tripeptide Growth Factor, Superoxide Dismutase (SOD),  
Hyaluronic Acid, Vitamin C (Tetrahexyldecyl Ascorbate)

Powerful and rare antioxidants including a unique form of Vitamin C are combined in a luxurious age-defying formula that is clinically proven to provide 24-hour hydration as it diminishes the look of fine lines and wrinkles, the loss of firmness, and discoloration.

## CLINICALLY PROVEN RESULTS

### SKIN HYDRATION

**100%**

in 1-week corneometer results



BEFORE



AFTER 1 WEEK

### MORE VOLUMIZED

**91%**

in a patient survey after 4 weeks



BEFORE



AFTER 4 WEEKS

Study performed at BioScreen Testing Services, Inc.



hydrate & treat

## HYDRA-COOL SERUM®

**HYDRATING, SOOTHING, ANTI-BLEMISH**

Key Ingredients:

Hyaluronic Acid, Vitamin B5, Centella Asiatica, Mushroom Extract

HYDRA-COOL SERUM is designed to hydrate, soothe, and visibly rejuvenate the skin. This rich yet lightweight serum is formulated with pharmaceutical-grade potent botanical extracts which provide essential bio-nutrients and multi-level antioxidant protection. HYDRA-COOL SERUM is designed for all genders, skin types and for all ages. This gentle penetrating serum is great for anytime hydration, post sunburn, after shaving, and helping to reduce the appearance of breakouts.





hydrate & treat

## REPARATIVE MOISTURE EMULSION with Extremozyme® Technology

**RESTORING, HYDRATING, SMOOTHING**

Key Ingredients:

Extremozymes®, Hyaluronic Acid, Superoxide Dismutase (SOD),  
Copper Tripeptide Growth Factor

The professional makeup artists favorite; this luxurious lightweight cream complex not only provides unsurpassed levels of hydration; REPARATIVE MOISTURIZING COMPLEX is a powerful age-defying formula featuring extremozymes which are clinically proven to help prevent DNA damage.



protect, treat, hydrate

## EXTREME PROTECT® SPF 30 with Extremozyme® Technology

**HYDRATING, RESTORATIVE, ULTIMATE PROTECTION**

Key Ingredients:

Extremozymes®, Encapsulated Octinoxate, Zinc Oxide, Vitamin E

protect

## ECLIPSE SPF 50+ (PerfecTint® Beige)

**ULTRA SHEER, BROAD SPECTRUM, SPF 50+**

Key Ingredients:

Titanium Dioxide, Zinc Oxide, Vitamin E



Our broad-spectrum UVA/UVB sunscreen formulas help prevent sunburn, sun damage and the visual signs of photoaging, all while providing a luxurious feel and non-greasy finish.

Ground-breaking EXTREME PROTECT SPF 30 combines encapsulated organic sunscreen actives with transparent zinc oxide, powerful antioxidants and extremozymes which are clinically proven to help prevent DNA damage that can lead to skin cancer.

ECLIPSE SPF 50+ and ECLIPSE SPF 50+ PerfecTint Beige feature non-penetrating Transparent Zinc Oxide and Titanium Dioxide combined with antioxidants.